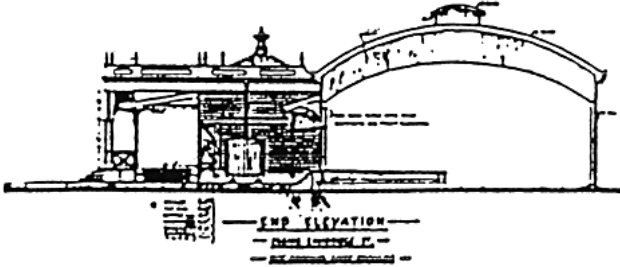




The Friends of Archer Park Rail Museum, Rockhampton Queensland

Carriage Shade



Station elevation with carriage shade, from Riddell (1994), Archer Park Railway Station Conservation plan.

The carriage shade is the full length curved roof over the platform and adjacent tracks. It protects passengers and trains from the tropical sun and eliminated the need to build a separate carriage shed. The opening at the top allows heat and locomotive/tram smoke to escape.



Lining up for a 'snag' under the Carriage Shade for a Carriage Shade Capers Sunday in 2010 [lz 6641]



Under the Carriage Shade: Family fun and model railways during the June 2012 'Capers'. [lz 9631]