



Friends of Archer Park Station & Steam Tram Museum Inc

URL: QldRailHeritage.com/ArcherPark

PO Box 573, Rockhampton, Qld 4700 Australia

Ph: 07 4922 2774 Fax: 07 4927 0120 E-mail: archerpark@rrc.qld.gov.au

Volume 2 Number 4, **November 2008**

TRAM TRACKS

Happenings and Coming Events

The Friends of Archer Park will hold a **Melbourne Cup** luncheon and afternoon on the 4th November. Last year's event couldn't be held because of the horse virus. Please see Dot or Aurilea if you want to attend this function at Archer Park.

The Friends of Archer Park are looking at holding a **night opening** of the museum on Wednesday, 12 November. We are looking at having a bush poet night and maybe making and selling hamburgers.

Dave and John C are progressing well with the **restoration of JCS 1007**. John is now working on the other side of the coach, pulling off all the rotten slats and moving all the good timber to one end.

Dave is now working on one of the toilets which had a lot of rotten timber and sheeting in it. He also coach bolted the two chrome handles back into place either side of the door, making the coach look a little more complete. Now the lettering needs to be painted back on.

The Briggs & Stratton motor out of the **Tamper 6** will soon be ready for pick up from Rimrocks. As soon as the motor is reinstalled the side rails can be made and installed.

New batteries are on order from QR Redbank for **DEL 1614** and soon as they come available we will have to send a truck down to collect them. It will be good to hear the sound of 1614 fire up again after a long spell of nothing happening. It also looks as though we will have to spend some big money and buy some diesel for the loco as it is showing close to being empty on the fuel gauge.

We have had another **donation** of around twenty railway books, and it was good to see that nearly all these books are ones we haven't seen before.

Archer Park passed the **spot audit** from Queensland Transport on Sunday, 5 October. this was what they call a Compliance Audit, the SMS Audit, which is a larger audit than the one we have just had, is yet to come.

CQ Combined Rail Groups Network

The meeting, tour and lunch at Mt. Morgan (4 October) was a huge success with forty representatives attending from Emu Park, Monto, Bundaberg, Rockhampton and Mount Morgan. Seventeen also did the mine tour, for some of us who lived in Mt. Morgan it was good to see what is left of the mine buildings.



Lunch and the photo shoot at the CQCRGN meeting, Mount Morgan, John James, photographer.

Congratulations to Narelle and her team for putting on a good day for us all. With only a few months to go before Christmas the next meeting will be in April.

While rail industry or Council representatives are sometimes invited to attend, the network is not an industry or Council body. CQCRGN was formed for the rail heritage groups in CQ to come together and share memorabilia, stories, exchange brochures, respond to information from rail industry sources (eg QT), etc. Rotating meetings allows the host group to showcase what they are doing.

Thanks to all the groups who have participated by holding meetings, tours and luncheons in their towns over the past eight years.

Volunteer Activities

Could volunteers who staff the **admission window** please put away all brochures after you have read them, take home your magazines and leave the area tidy. Some items have been left on the counter after being read.

The Friends of Archer Park will hold their **Christmas Party** on Saturday, 22 November, at Archer Park. Dot, Aurilea and Wilma will prepare the Christmas dinner themselves. The cost to the volunteer will be \$8.00 each, and non volunteers \$12.00 each.

Four of our tram crew are attending QR's Driver Training Centre to do the course to obtain their **track side working** pink cards. QR does not hold courses in the afternoons, and as some individuals cannot attend in the morning we may lose some volunteer crew.



Mt Morgan Mine with the town in the distance, 4 October 2008. Lynn Zelmer, photographer.

Mount Morgan Station Museum

Andrew Simpson has the accreditation in progress, and the museum hopes to introduce section car operations in the station yard shortly, followed by the Silver Bullet and steam operations in 2009.

Safety Issues

A safety issue has risen at Archer Park with the Safety Officer bringing to our attention his concerns about the public being allowed to inspect memorabilia, exhibits, coaches, etc., on the lower platform when the tram is running through the station.

Dennis is currently looking at ways to allow the public to go down to the bottom platform, including risk assessments, barricades, fencing, volunteer training and tour guides to keep everyone together on those days that the tram is running.

ATHRA Alert #40 indicates the use of mobile phones and other electronic devices can be distracting while carrying out safety critical work around a railway and result in incidents. It advises that appropriate procedures need to be put in place to restrict the use of mobile phones around the railway.

Preserving Queensland's Rail Heritage

While physical artefacts such as we have in the Museum are important to preserving our heritage, photographs and other items are also important. Your editor's recent visit to Brisbane resulted in the acquisition of over 300 images of QR locomotives, rolling stock and stations.

Now scanned, the images are available on the web (QldRailHeritage.com and follow the link to AlbumQuery and photographer Bill Blannin).



One of the few images from Rockhampton in this collection is of Rail Motor RM16 in 1996. RM16 entered service 23 February 1933 and was used as an inspection vehicle by the Manager Central Division of Queensland Rail. It has been restored and is now on display in the main lobby of QR's Rockhampton station. Bill Blannin, Sandgate, photographer.

A Visit to Olds Engineering, Maryborough

As part of a recent trip to Brisbane your editor stopped in at Olds Engineering, 78-80 North Street, Maryborough.

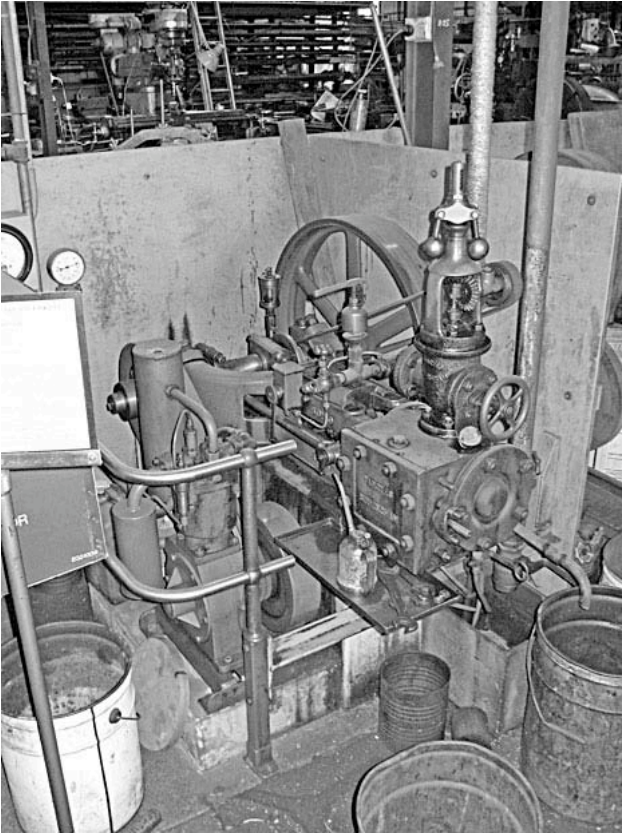
Maryborough has long had an engineering tradition, particularly building railway locomotives. Olds Engineering built the replica locomotive 'Mary Ann' that runs in a park near the Maryborough CBD and provides mechanical engineering and foundry services, including cast metal parts for QR's Tilt Train, etc.

Peter Olds, a well-known builder of live steam locomotive models as well as being one of the

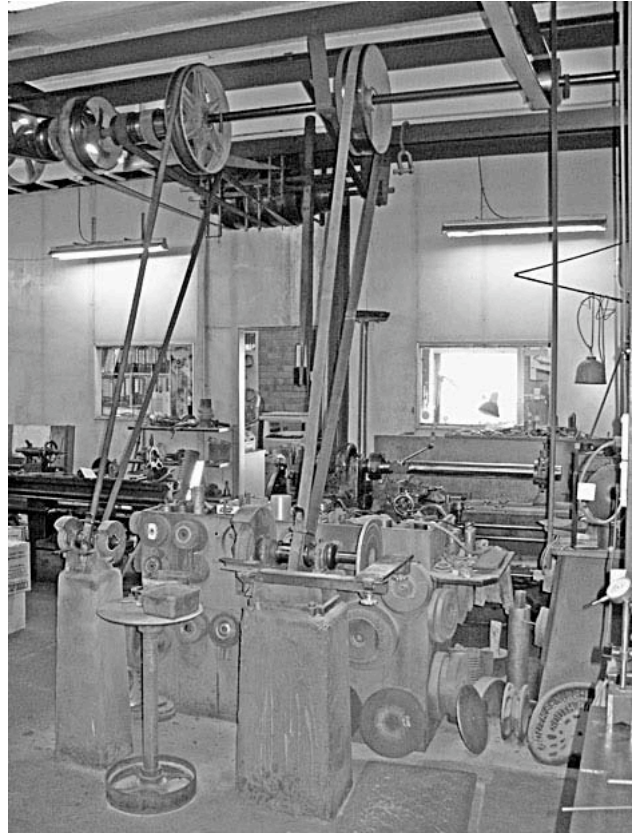
firm's principals, gave me a short tour of both the engineering works and their historical exhibits. The overhead belt system for driving a number of machines was a highlight of the tour but I'd love to return to examine his models more closely.

The photos on the next page show the overhead belt system as well as a new carriage being constructed for the Mary Ann train.

The works were formerly open to the public on a regular basis but now are only accessible by prior arrangement, although Mr Olds indicated that they were hoping to open them up again for more regular visits.



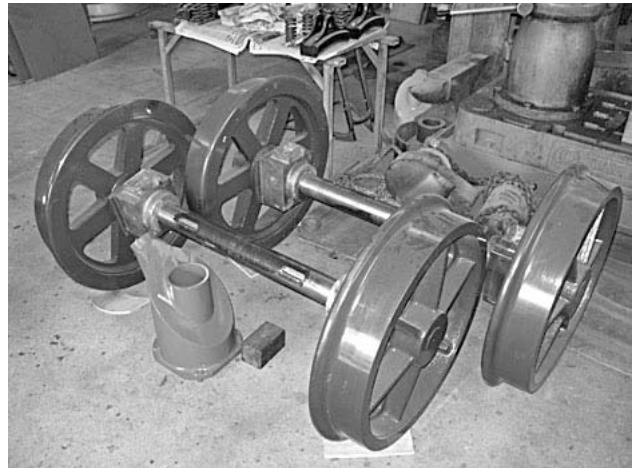
The steam engine that powers the overhead belt-driven machine shop.



Some of the machinery driven off the overhead belt system.



Third carriage for 'Mary Ann' under construction, the metal frame will eventually be raised for the roof structure.



Wheelsets for 'Mary Ann' carriage. All photos Lynn Zelmer.